
eSchoolPad

for Mac



Mac

INSTALLATION GUIDE v1.0

Prepared by: Avrio Solutions Company Limited



Prerequisites for eSchoolPad Installation

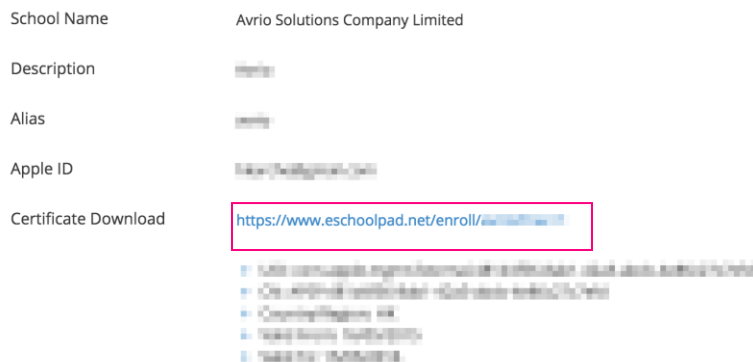
The following items MUST be ready and available before installation:

1. Mac Machine
2. Apple ID
3. Wi-Fi connectivity

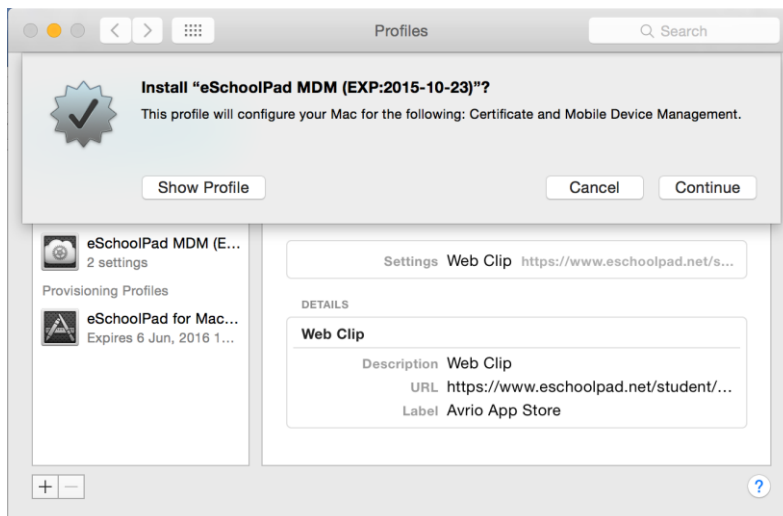
Step 1: Enroll eSchoolPad MDM Certificate to Mac

Admin Console

- Open **browser** and access **eSchoolPad Admin Console**, <https://www.eschoolpad.net/admin>.
- Login with **username** and **password**.
- Go to **Mac > Settings > School Info**, download your school MDM certificate file for Mac.



- Double click the the **“eSchoolPad MDM certificate”** file and click **“Continue”**, then click install.

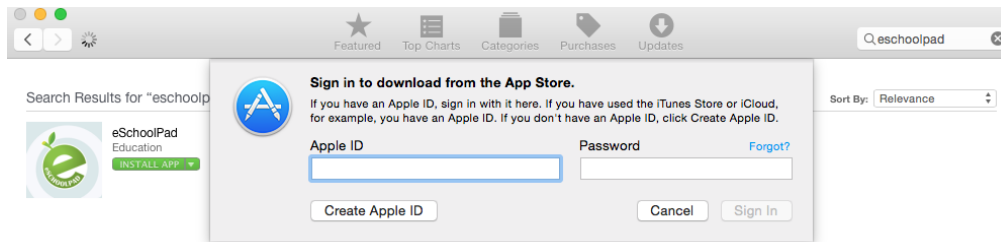




ESCHOOLPAD INSTALLATION GUIDE FOR MAC

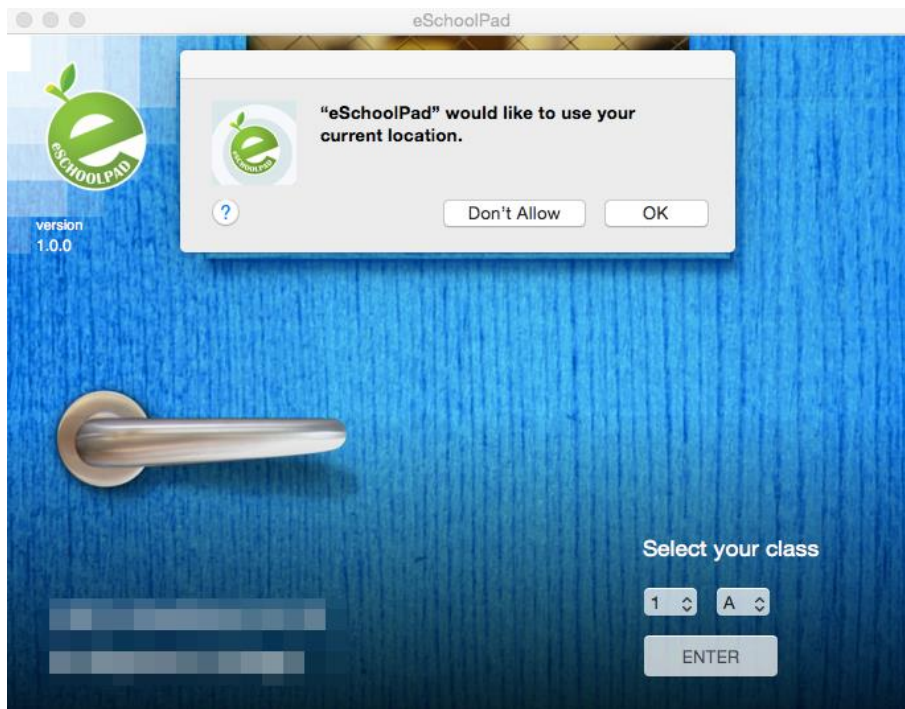
Step 2: Install eSchoolPad through App Store

- Go to App Store on Mac Machine.
- Enter “eSchoolPad” in the search bar.
- Click “GET” and “INSTALL APP”.
- Provide **Apple ID** and **Password** appropriately.
- Finish downloading eSchoolPad.



Step 3: Setup eSchoolPad

- Open eSchoolPad by clicking “OPEN” through App Store or by selecting eSchoolPad icon in LaunchPad.
- Select “OK” to allow the permission of using the current location.

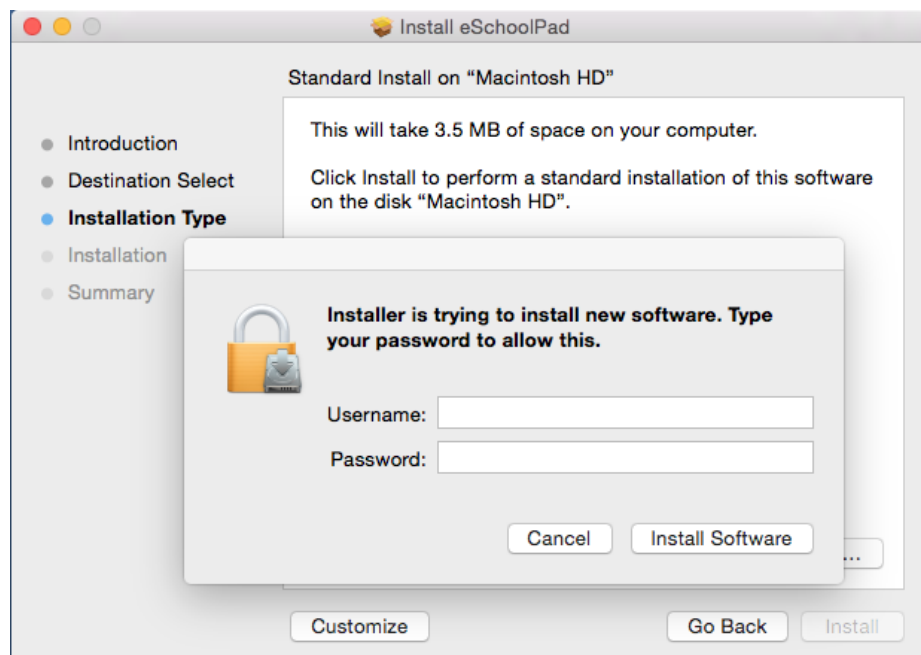




Step 4: Install eSchoolPad Restriction (for Mac Version)

The eSchoolPad Restriction will help eSchoolPad to keep running and load eSchoolPad automatically when mac starts.

- Make sure eSchoolPad is closed before the installation.
- Download the eSchoolPad Restriction package file
<https://www.eschoolpad.net/upload/osx/eSchoolPad4MacRestriction.pkg>
- Double click the package file and click “Continue”.
- Click “Install Software” and input the username and password.



- The eSchoolPad should open automatically after you finish the installation.



Health Check

Admin Console

- Open **browser** and access **eSchoolPad Admin Console**, <https://www.eschoolpad.net/admin>
- Login with **username** and **password**
- Go to **Mac > Devices > All**, check your newly added Mac

Action	Label	Name	Model	OS	BYOD	Locked	Space	Apps	AppStore	Reg. Date	MDM EXP.	Last active	Status
Actions			iMac14,1	10.10.4	✗	🔒	N/A	0	1	2015-07-09		10 mins	
Actions			MacBook Pro	10.10.2	✗	🔒	62%	400	1	2015-03-11	2015-10-23	1 day ago	✓
Actions	David		MacBook Pro	10.10	✗	🔒	22%	395	1	2015-05-10		4 hours ago	✓
Actions			MacBookPro10,1	10.10.3	✗	🔒	N/A	0	1	2015-07-08		> 2375 weeks ago	
Actions			MacBook Pro	10.10.3	✗	🔒	15%	421	1	2015-05-07		4 hours ago	✓

- Congratulations! You have completed a new device installation.

For support and enquiry, please contact our Support Team.

Mobile: 55466824

Email: info@eschoolpad.com