



# ParSon

Leading parental control service  
for Apple and Android mobile devices

## User Guide



ParSon

Username@email.com

.....

[Register](#)

[Forget Password?](#)



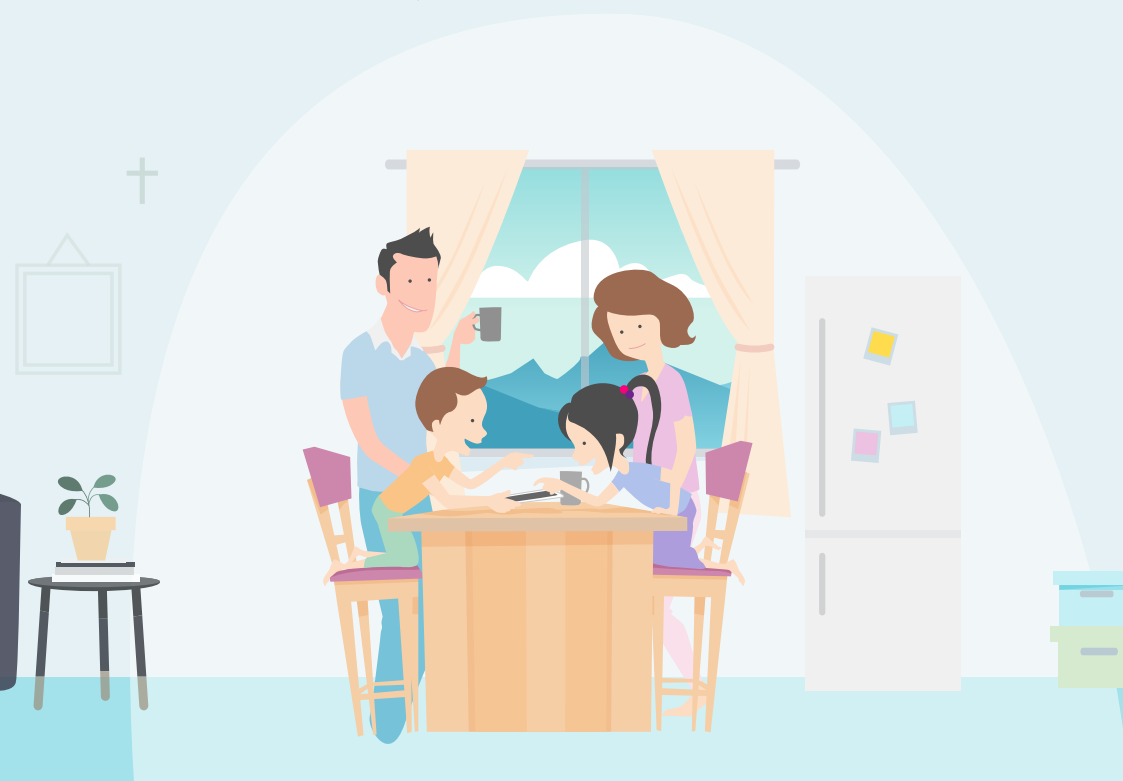
# INDEX

• What is ParSon	p.1
• Download & Install	p.2
• Create Account	p.3
• User Login	p.4
• Pairing	p.5
• App Lock	p.6
• App Lock - Whitelist/Blacklist	p.7
• App Lock - Whitelist Function	p.8
• App Lock - Blacklist Function	P.9
• Schedule	p.10
• Schedule - All App page	p.11
• Schedule - Whitelist/Blacklist	P.12
• Block	P.13
• Location	p.14
• Control	p.15
• More	p.16

# What is ParSon

ParSon is a leading parental control service for Apple and Android mobile devices. ParSon helps parents to take control of the child's Apple/Android mobile devices on WiFi and cellular networks. Parents can LOCK apps, BLOCK inappropriate sites and set Schedule on screen time with just a couple of taps.

ParSon aims to assist parents to foster kids with good behavior and balanced school-leisure time - RECLAIM YOUR FAMILY TIME!





## Download and Install

Please make sure your device fulfill the installation requirement before install, login and upgrade.

### Apps



**ParSon**

Available space: 50MB

Connectivity: 3G / 4G / Wi-Fi

for  **iOS**,  
you must have:



iOS 9.3 or above

Apple AppStore

Apple ID

Apple ID password



for  **Android**,  
you must have:



Android 6.0 or above

Google Play

Google Play account

Google Play password



## Download & Install

Intsall ParSon. This app empowers you. Make sure your kids using the mobile device appropriately.

1

Search



"ParSon" from



App Store

/



Google Play

2

Click

**INSTALL**

3

Open

"ParSon"

from your device








## Create Account

To get started with ParSon, signing up a new account on parent's device and follow along.

1 Open **"ParSon"**

2 Tap **"Register"**

The image shows the ParSon app's main screen. At the top is the ParSon logo, which consists of a stylized blue 'S' shape above the word 'ParSon'. Below the logo are two input fields: 'Email Address' and 'Password'. Under the 'Password' field, there are two links: 'Register' in red text and 'Forget Password?' in blue text. At the bottom center is a blue circular button with a white key icon.

3 Fill in your informations &  to confirm

The image shows the ParSon app's registration screen. At the top left is a back arrow icon, and to its right is the title 'Register'. Below the title are four input fields: 'Email Address', 'Last Name' and 'First Name' (split), 'Password', and 'Confirm Password'. At the bottom, there is a line of text: 'By clicking ✓ Submit, you agree to ParSon's User Agreement & Privacy Policy.' Below this text is a large blue button with a white checkmark icon.

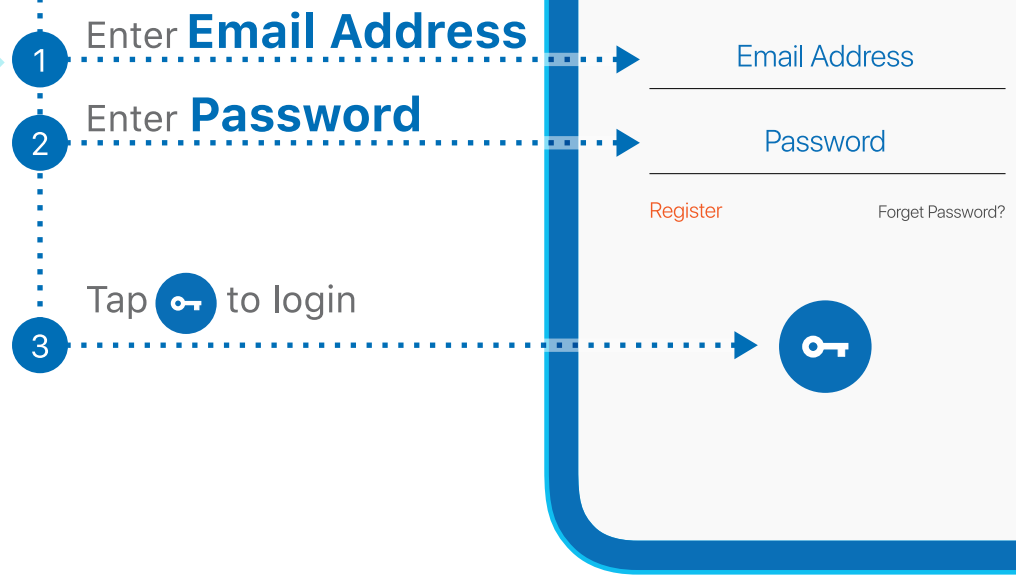
4 Check your email &

ACTIVATE ACCOUNT



## User Login

Welcome to ParSon, a user-friendly interface to ParSon Mobile Device Management





## Pairing Device

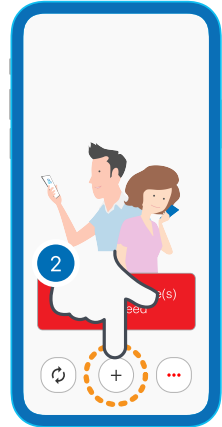
To get started with your ParSon, pair and sync it with your kid's mobile device.

### PARENT's Device ( / )

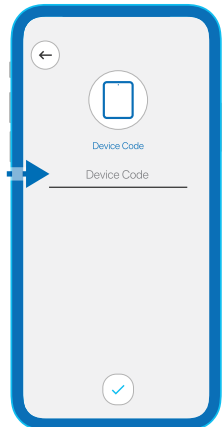
- 1 Open & Login **"ParSon"** app



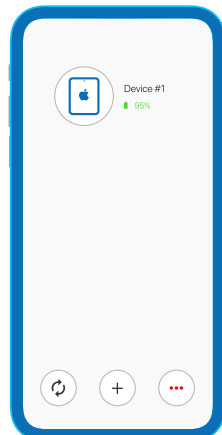
- 2 Tap  in device page



- 3 Input the **Device Code** which provided by school, then Tap 



Pairing Completed!





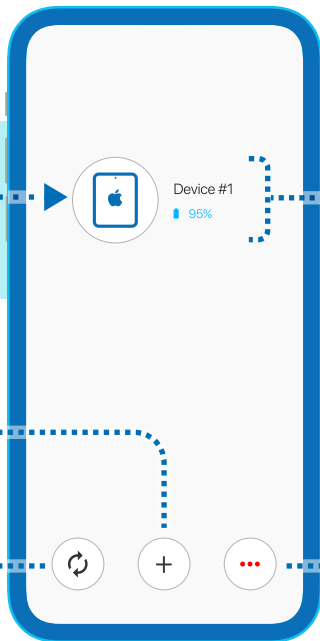
## Interface - Landing, Device

Knowing the right information for right decision, ParSon work the way you want. You control the device that determine the usability.

1

Tap **Device**

to start  
Device Control



### Device Info.

- Device Name
- Battery

**Add Device**

**Refresh  
All Device**

### More...

- User Agreement & Privacy Policy
- Quick Tour
- About Parson
- Languages
- Sign Out

2

## DEVICE Management

Tap to **Edit**  
Device's Thumbnail  
and Device Name



**Back** to  
Landing page

**Refresh**  
current device

### Device Info.

- Device Name
- Device Model & Spec.
- Battery
- No. of apps installed

### App Lock

allow parents to  
SHOW / HIDE  
selected apps

### Block

limits access to  
inappropriate sites

**Control** to turn  
ON / OFF device's  
features

### Schedule

Set  
to block apps, games &  
webs in regular basis

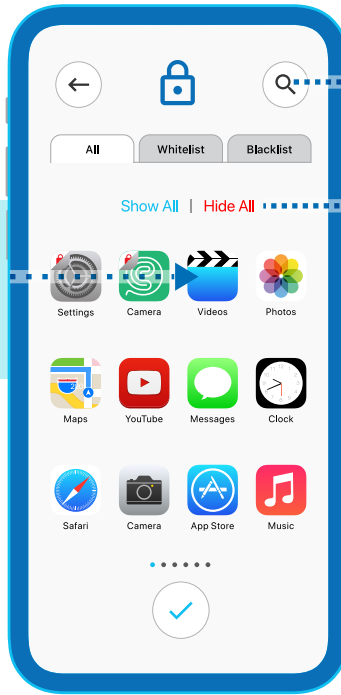
### Locator

can locate  
kid's device



# App Lock

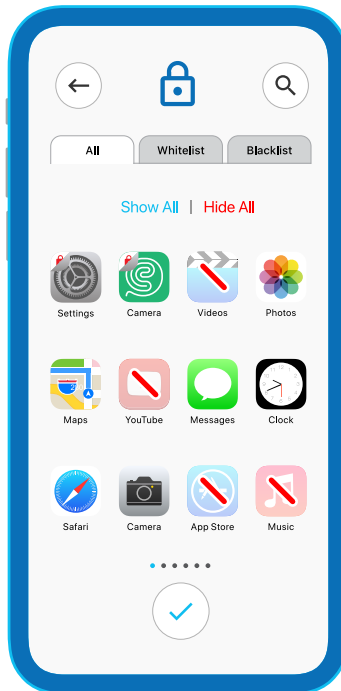
Allow parents to SHOW / HIDE selected apps



**Search**  
to find App

**Tap for  
Show All/  
Hide All apps**

Tap **App(s)**  
for select/  
unselect



Then Tap

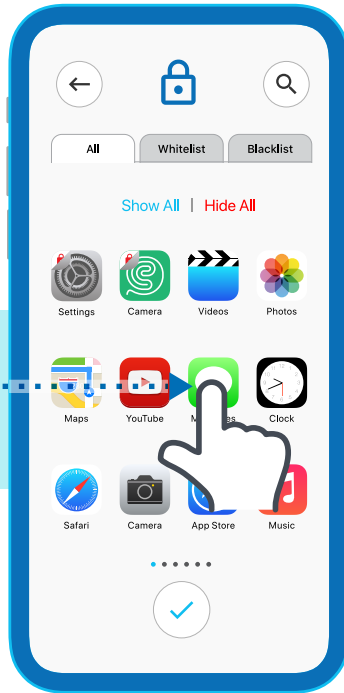


# App Lock - Whitelist / Blacklist

- Whitelist for show App(s) on Mobile Device.
- Black list for hide App(s) on Mobile Device.

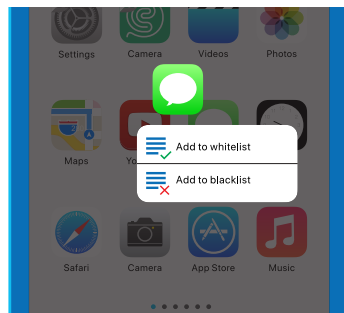
1

Tap an App  
and hold for  
seconds.



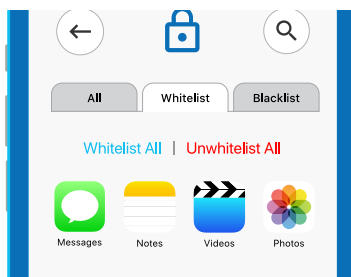
2

Select add  
to Whitelist  
or Blacklist



3

Selected  
App added  
into Whitelist.



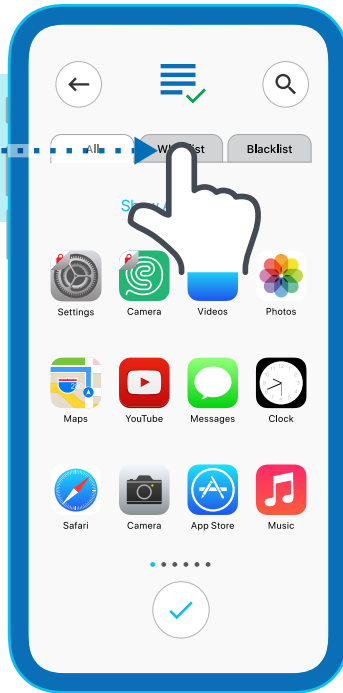


# App Lock - Whitelist

- Whitelist for show App(s) on Mobile Device.

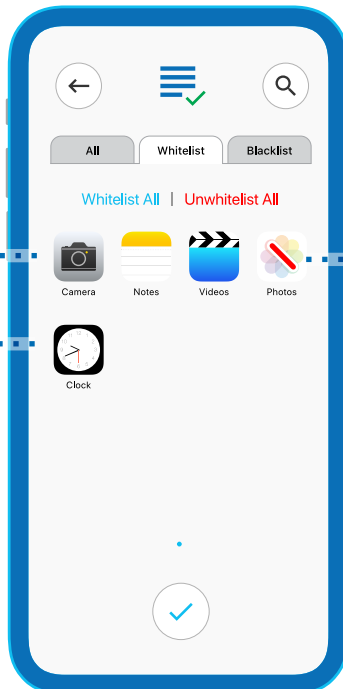
Tap on Whitelist

1



2

These Whitelist Apps will shown on Mobile Device only



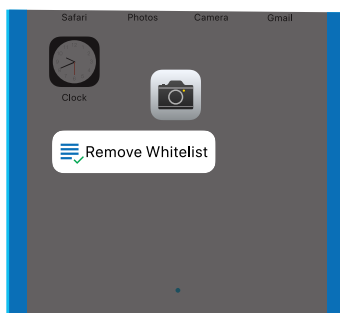
This unselect Apps will not shown on Mobile Device

3

Then tap



Remove App on Whitelist:  
Tap on an App for seconds, then click "Remove Whitelist"



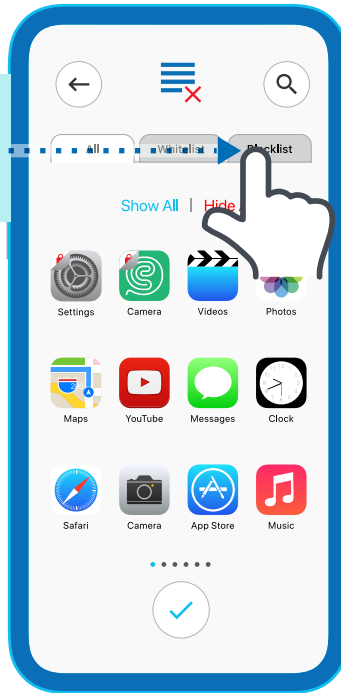


# App Lock - Blacklist

- Blacklist for hide App(s) on Mobile Device.

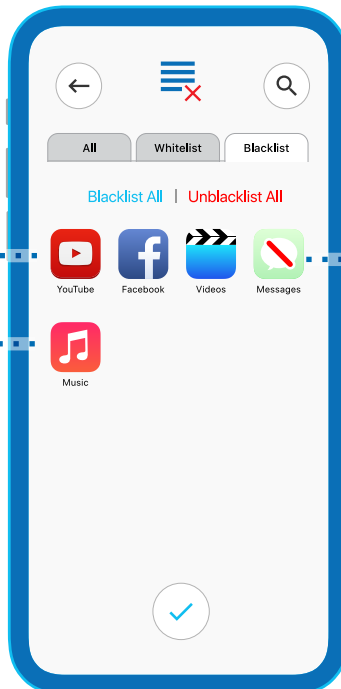
Tap on **Blacklist**

1



2

These Blacklist Apps will Hide on Mobile Device

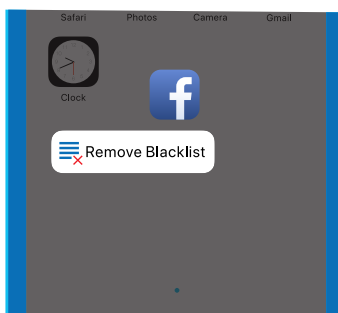


This unselect App will not Hide on Mobile Device

3

Then tap

Remove App on Blacklist:  
Tap on an App for seconds, then click "Remove Blacklist"







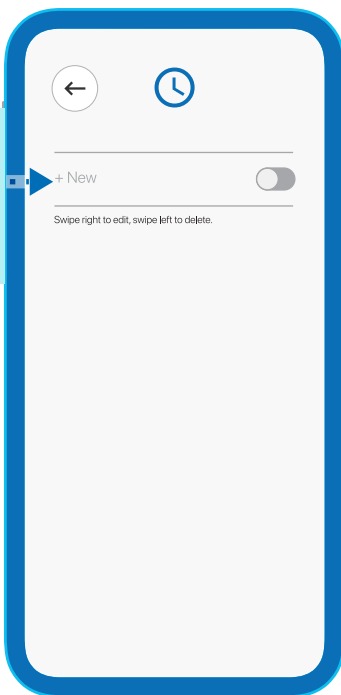
# Schedule

Set timing for Show / Hide apps

1

Tap **+New**

to enter the page  
for schedule edit.



2

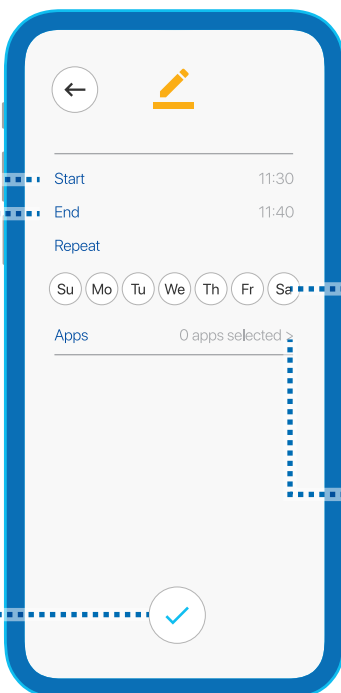
Schedule edit page

Tap for enter

**Start time**

Tap for enter

**End time**



Tap **icon(s)** to  
selected weekday  
for schedule

Tap to enter Apps  
selecting page.

Tap  when  
schedule set



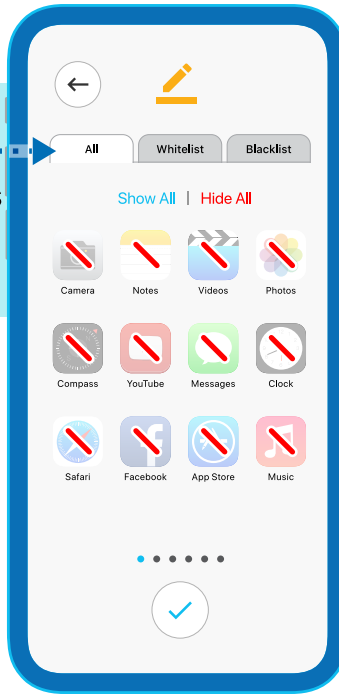
# Schedule - All Apps select page

App selecting page

1

Tap for select

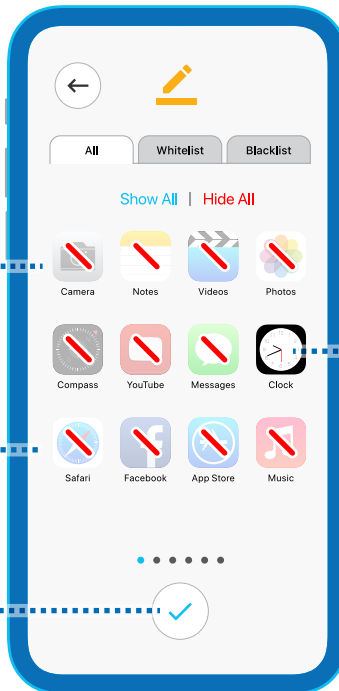
app(s) on all Apps List, Whitelist or Blacklist




2

All (apps list)

Apps default as will hide on Mobile Device



Tap **icon(s)** to unselected for Hidden on Mobile Device

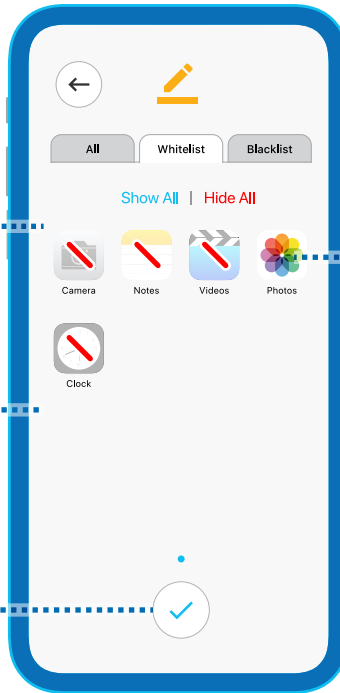
Tap  when App(s) selected




## Schedule - Select App(s) in Whitelist

Whitelist App(s) selecting page

Apps default as  
will hide on  
Mobile Device



Tap **icon(s)** to  
unselected for  
Hidden on Mobile  
Device

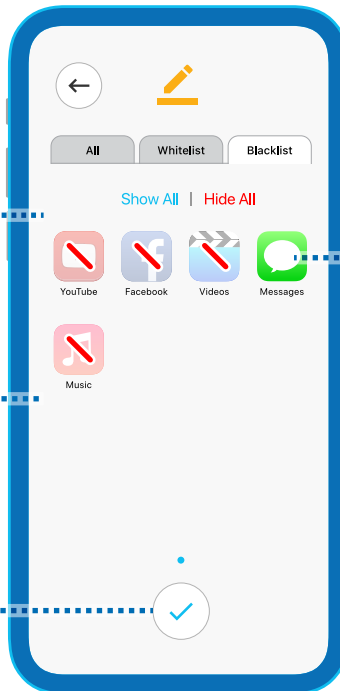
Tap  when  
App(s) selected



## Schedule - Select App(s) in Blacklist

Blacklist App(s) selecting page

Apps default as  
unselect for  
hide on Mobile  
Device



Tap **icon(s)** to  
selected for  
Hide on Mobile  
Device

Tap  when  
App(s) selected



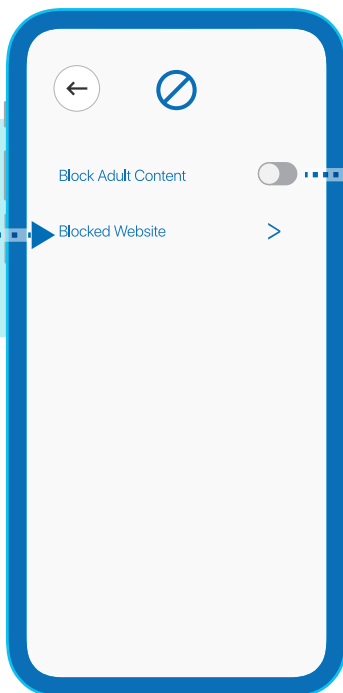
## Block

limits access to inappropriate sites.

1

Tap **Blocked Website**

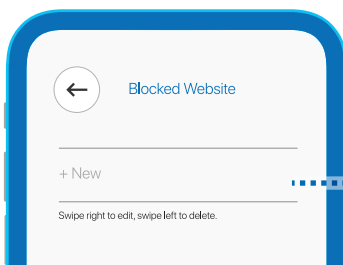
to enter website for blocked



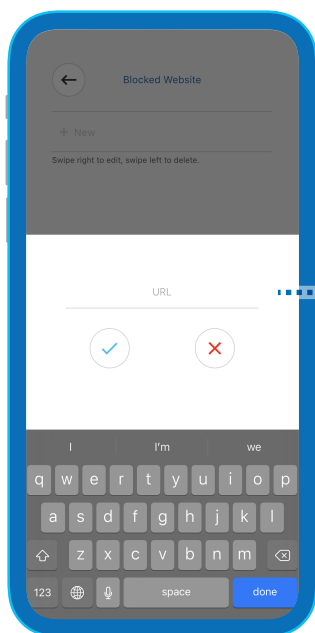
Tap for  
**Turn On  
Block Adult  
Content**

2

**Blocked Website**



Tap **+ New** to  
enter website  
for block

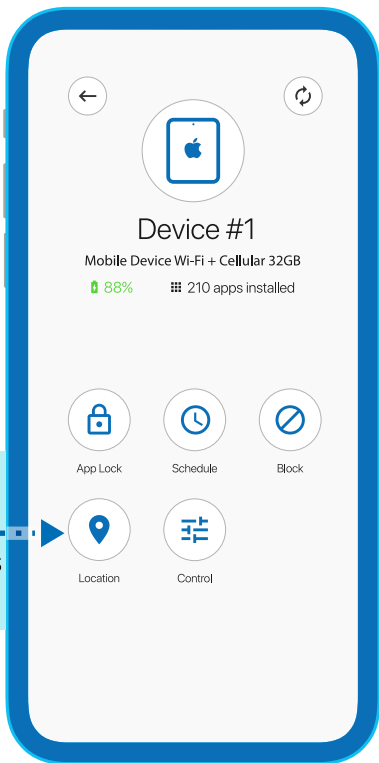


Enter the website  
and tap ✓  
for saving



# Location

can locate kid's device.



1

Tap **Location**  
to check where is  
the device

2

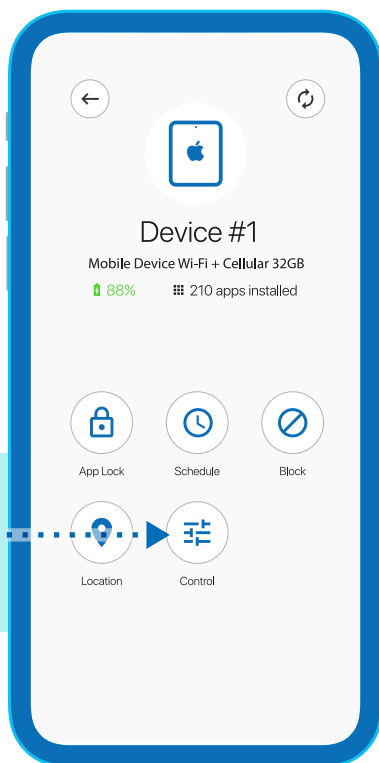
Location shown on Google Map





# Control

To turn on/off device's features.  
(Apps list depends on School Policy setting.)



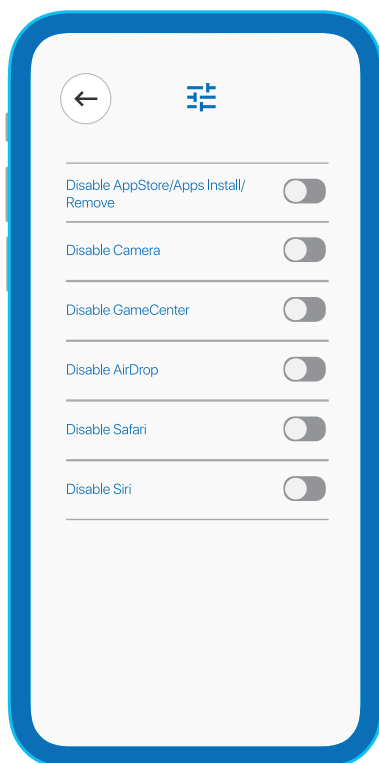
1

Tap **Control**

to turn on/off  
device's features

2

Tap  for turn on or turn off



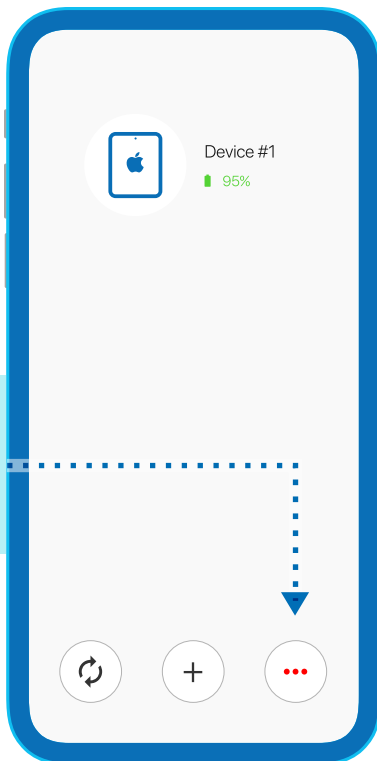


## More

Other information for ParSon.

1

Tap **More**  
other information



2

Tap Sign out  
if need.

